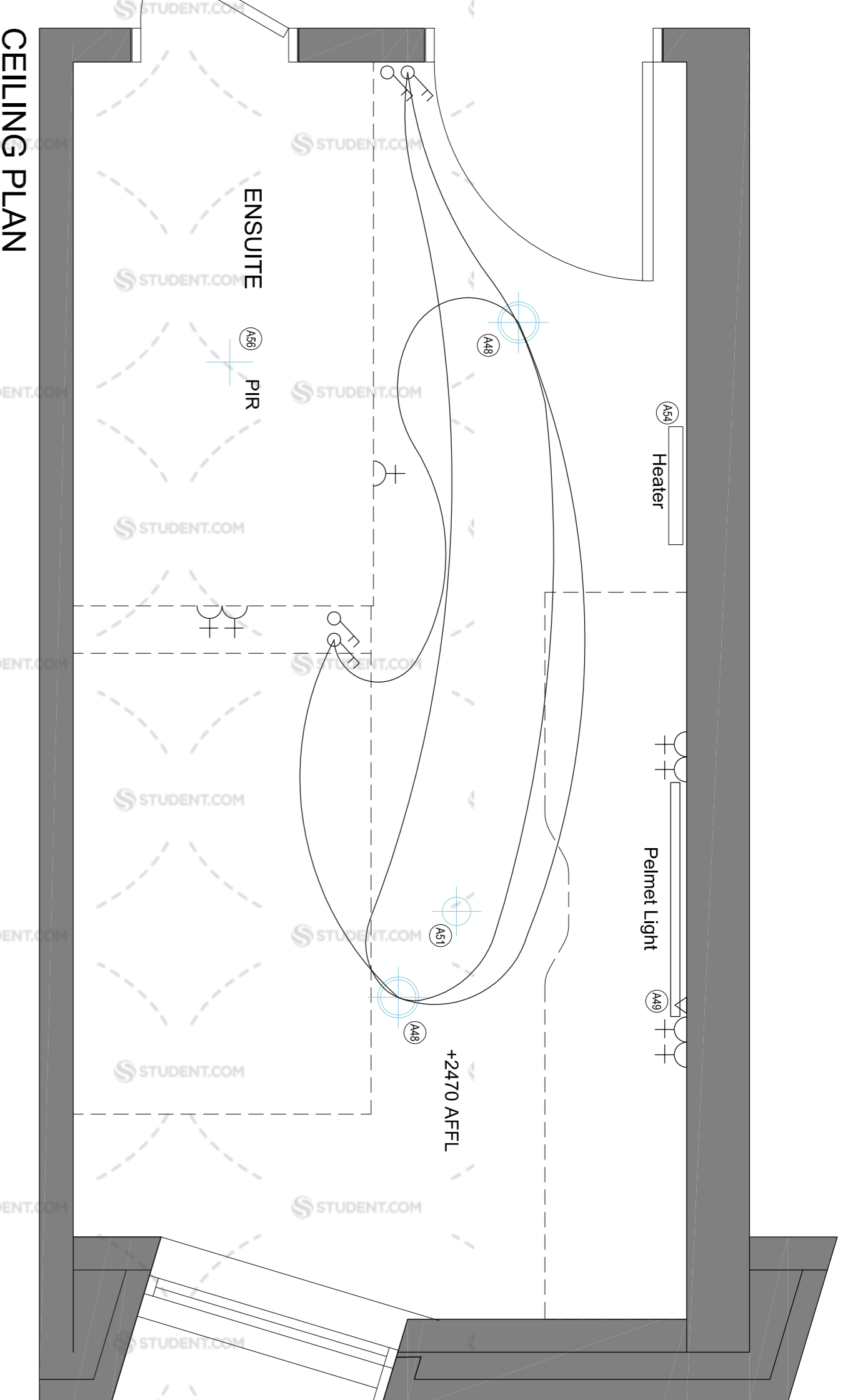
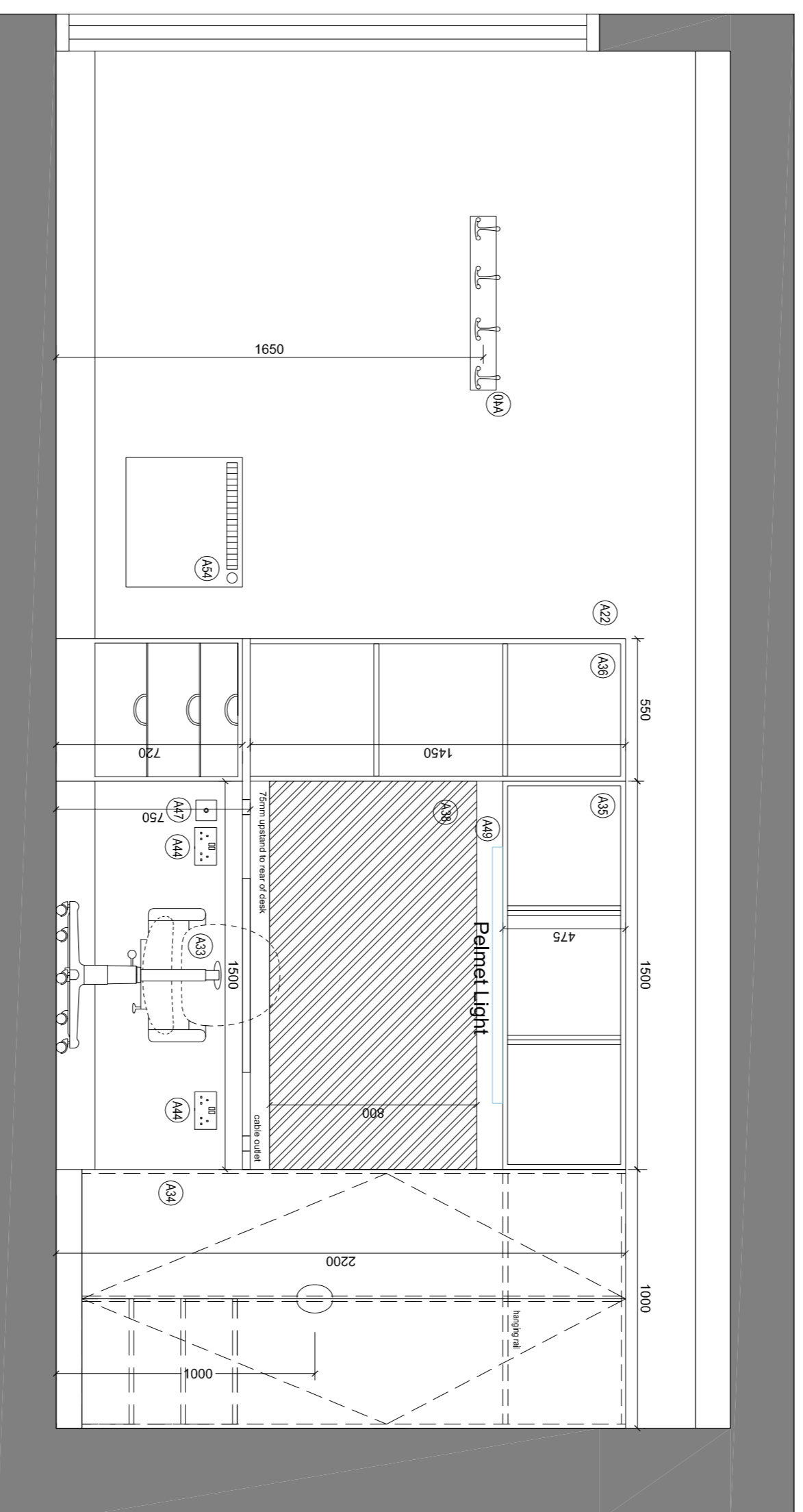


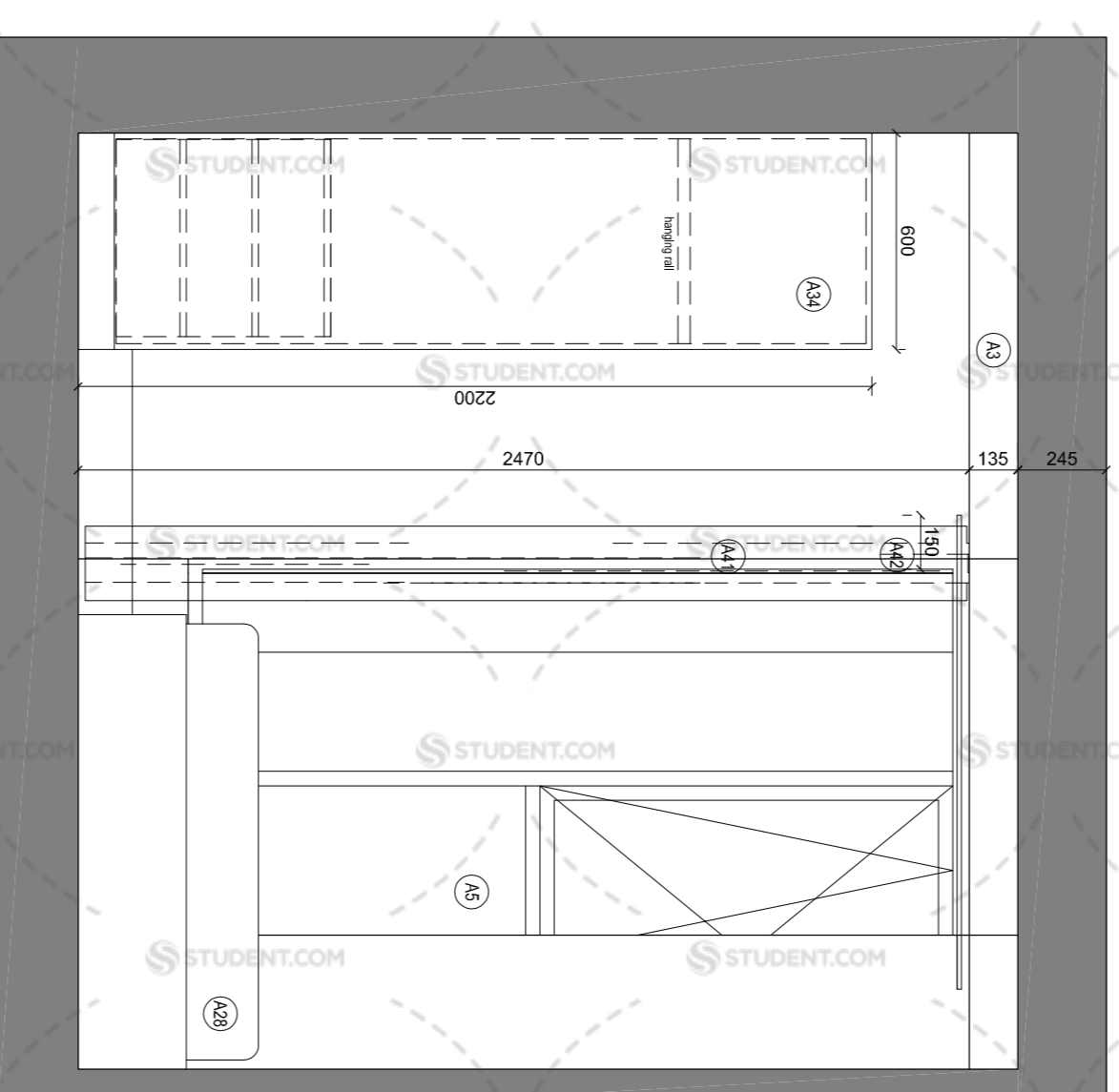
PLAN



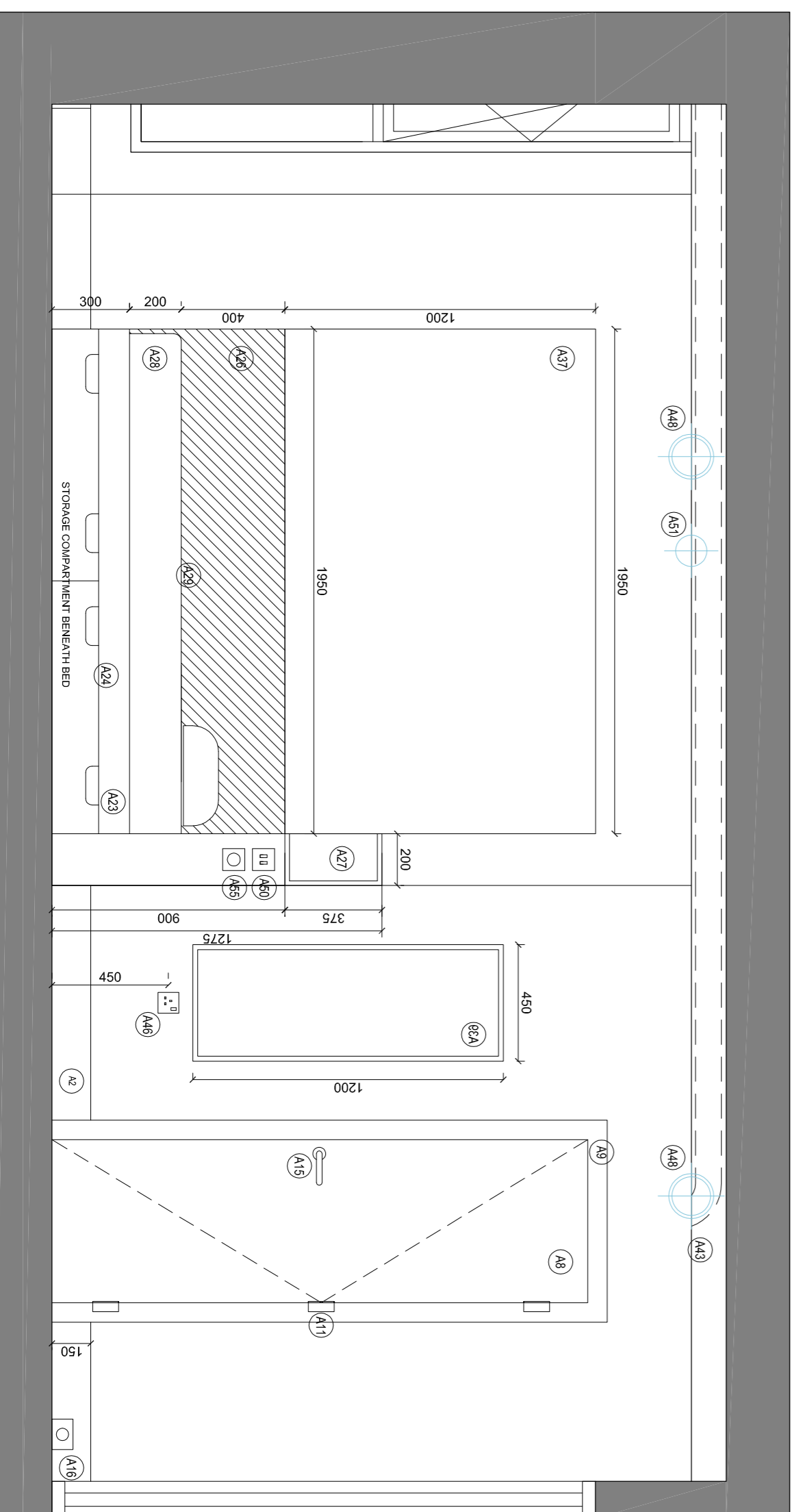
CEILING PLAN



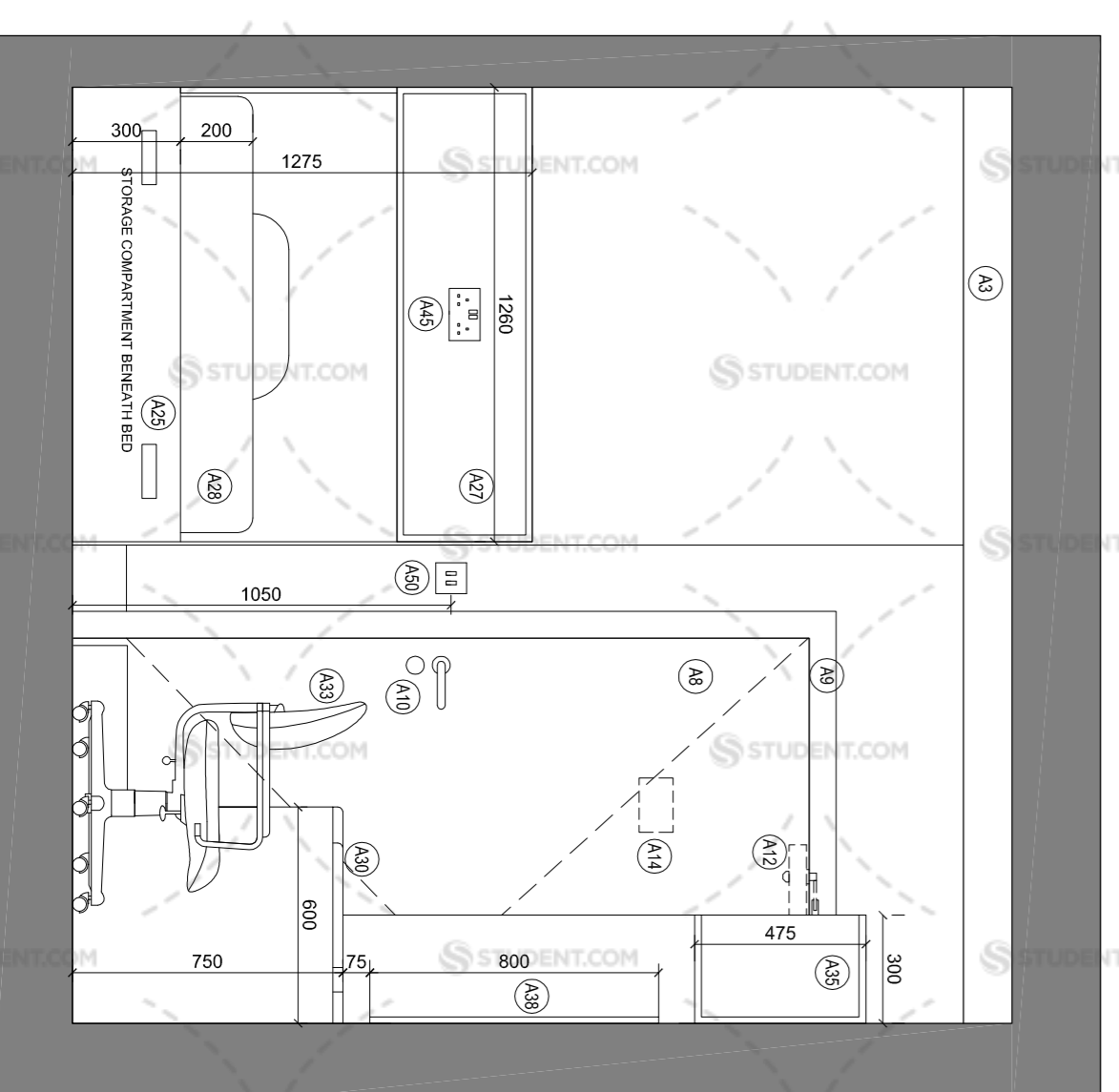
ELEVATION A



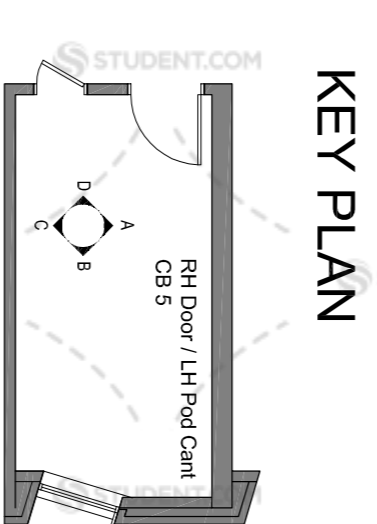
ELEVATION B



ELEVATION C



ELEVATION D



KEY PLAN

Scale of Metres - 1:20

Revision	Description
A 24.07.14	Drawers removed from below desk Wardrobe dimensions increased Mirror located opposite wardrobes on pod wall
B 29.08.14	Vertical dimensions adjustment Thickness wall amended
C 12.09.14	Added Reflected Ceiling Plan + Electrics & Lightings
D 17.09.14	Additional light switch connection shown on ceiling plan and double socket moved to middle of headboard. Wardrobe width amended (1000mm). Tall Storage Unit width amended (550mm). Heater relocated.
E 03.11.14	Legend amended. PIR added to shower pod. Switches/ sockets level raised to 450mm above FFL.

NOTE: WINDOW ELEVATIONS  
ARE INDICATIVE

LEGEND

- A1 Drip-lined, to receive paint finish
- A2 Dry-lined, to receive paint finish
- A3 Timber effect Vinyl
- A4 Refer to window specification and drawings
- A5 Opening vents to be left & run (generally to provide ventilation in accordance from the inside. Ventilation Strategy and to provide access for safe cleaning)
- A7 100mm Integral Restrictor with key override (subject to Client / CDM/C approval) fitted with tamperproof screws
- A8 Timber veneered doorset with painted SW door frame OR Timber effect HPL Timber veneered doorset with painted SW door frame
- A9 75 x 10mm architrave to receive paint finish
- A10 Sandstone (battery powered) DDA Compliant FR Electronic Lock with RFID technology with additional single cylinder lock for manual override
- A11 Hinges 1 1/2 Pairs
- A12 Overhead door closer
- A13 Floor mounted door stop
- A14 Timber veneer splash panels by Contractor as per Richard Street
- A15 Timber veneer splash panels with painted SW door frame OR Timber effect HPL faced doorset with painted steel door frame
- A16 75 x 10mm architrave to receive paint finish
- A17 Lever latch and extended pull bar on inside for disabled use
- A18 Hinges 1 1/2 Pairs
- A19 Skirting mounted door stop
- A20 Skirting furniture with HPL finish to include different colour/finishes - refer to indicative furniture types. SFR Close drawers and hinges (20" Hinges)
- A21 ~
- A22 Cable Bed 349(N) x 1290(W) x 1950(D)mm OIA Frame Dimensions
- A23 Under bed storage with the horizontal mattress base to provide access to under bed storage
- A25 2 no. ventilation grilles within the foot panel
- A26 Wall Protection Panel to wall side of bed 400(N) x 1950(D)mm
- A27 Bedhead shelf unit with integrated power 1275(N) x 1250(W) x 200(D)mm
- A28 4-Extrudeep Mattress (2000mm dp) with 12.5 gauge springs; rod edges and 4-Scandinavian Anti-Allergy Mattress Protector
- A29 28mm Thick HPL PL Pedestal Desktop 1500 (W) x 600 (D)mm with 75 (H)mm upstand to match desk
- A30 ~
- A31 ~
- A32 Chrome Support Leg
- A33 ~
- A34 Wirerope - 2200 (L) x 1000 (W) x 600 (D)mm inc. 100 (H)mm girth. Centre divide with high and low level hanging rails to one side, 3 no. shelves to the other
- A35 Wall mounted bookshelf - 1500 (W) x 475 (H) x 300 (D)mm over desk with pelmet
- A36 Tall lighting unit 2200 (L) x 550 (W) x 800 (D)mm at the end of the desk with 3 no. drawers up to 270 (H)mm and 3 no. open shelves 300mm deep (the lowest shelf is to match desktop)
- A37 Fabric covered pinboard above bed - Waiside of bed / 1200 (N) x 1950 (D)mm or Bedhead / 825 (N) x 1260 (D)mm
- A38 Bedhead / 825 (N) x 1260 (D)mm
- A39 Fabric pinboard 1200 (N) x 450 (W)mm to match bedroom furniture
- A40 4 no. Haircoat hooks mounted on wall plate to match bedroom furniture
- A41 FR Blatout Curtains and associated track to suit window aperture
- A42 Track to extend 150mm past window aperture or return to wall
- A43 Each pod to be individually ventilated to an external grille (15/second)
- A44 DSSO (Dotted Surface Safety Overlay) with pad head
- A45 DSSO adjacent to mirror
- A46 Data Outlet adjacent to desk
- A47 Lighting to achieve general luminance levels of 100lux and 300lux above the desk
- A48 2 no. 230V light switches (by bedroom door and at bed-head) operating main light fittings & Pelmet light.
- A49 L1-Fire alarm sounder bases and smoke detectors as detailed in M & E Specification. This item will be covered in the follow-on stage F warrant
- A50 Pod heating switch within the on-salls pod services riser
- A51 Electric heating system to be suitably sized to meet Building Regulations (Scottish Technical Handbook Section 6 & SBEW) as detailed in M & E Specification. Panel heaters with thermostat and 3 hour set back timers set to 50C. This item will be covered in the follow-on stage F warrant
- A52 Heater Boost
- A53 1 no. PIR light controls set in ensuite ceiling

Manson Architects

Headman Road  
10 Belford Road  
Edinburgh EH4 3BL  
T: 0131 225 2656  
F: 0131 226 2716  
E: info@mansonarchitects.co.uk  
www.mansonarchitects.co.uk

Watkin Jones

Project: Ablyhill  
Student Residences

Drawing Title	Level	Scale	Drawn	Checked
Level 01 Plan /CB5 - HH Door / LH Pod Cant		1:20	A1	MVO
Issue Status	<b>PRELIMINARY</b>			
Drawing No.	<b>1975_604</b>			
Rev.	<b>E</b>			

Project: Ablyhill  
Student Residences  
11 South 7th Street  
Dunfermline KY11 1NU  
T: 0131 226 2281  
F: 0131 226 2281  
E: info@mansonarchitects.co.uk  
www.mansonarchitects.co.uk  
London

All dimensions are levels to be checked on site and the Architect to be informed of any discrepancies prior to the commencement of work. Unchecked dimensions are to be checked at the start of the contract. All dimensions are to be checked on site. The Architect is not responsible for any discrepancies in the drawings. All dimensions are to be checked on site. The Architect is not responsible for any discrepancies in the drawings.